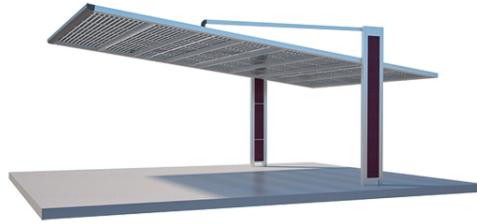


solarcarportsonline.com.au



Professional Choice Sheds, Garages & Carports

Building Your Cantaport



Step by Step Guide

(Please use in conjunction with installation manual)

Digging holes to 800 might be the hardest part –
Remember legs will be exactly 2.9m apart.



Steel sleeves are made perfectly to allow legs to slip over tightly



Work out some way to hold sleeves vertically, exactly 2.9m centre to centre apart. Some form work has been used here



Time for concrete to go in – (In this case the customer decided to extend the concrete to increase their patio space – normally it's just filling both holes – Don't move the sleeves!)



Concreting completed – In this case it had to have a nice smooth finish as it is now an extension of the patio area.



Next step – be very careful. Work out heights and then cut legs to length. **REMEMBER** one leg should be **200mm longer** than the other to allow the water flow in gutter.



When working out the exact leg length remember to allow for an approximate 200mm rise from top of legs to highest point in curve.

You will find that not all fasteners are in the box.
Some come strapped to the pieces in the kit



Now is a good time to use the glue provided and fit end plastic pieces to beams and 'plastic bed' at top of legs for gutter fitting



While you are doing this, you might stick on the packet of rubber blocks to rafter strips but this can wait until later.

(What are the little round paper – like discs for?)
Very rarely a drilled hole may not quite line up – the self-tappers will go in anyway and use the discs to cover the 'old' hole.



Legs are cut to size, just slip legs over the metal sleeves, they should be a good tight fit. Once leg is in place, slide in the steel elbows.



Elbows are on the legs, end beams are slipped on elbows and bolted on to elbow.



It may be an idea to not fully tighten the bolts until the end. A 1mm or 2mm 'wiggle' on a slightly loose bolts might be helpful – But remember to fully tighten at the end of the job if you do this!



Next step is installing the gutter on top of the plastic fittings on the top of the legs



Guttering in and now fit bearers across the beams.



Bearers in and finish off with fitting the end beams.



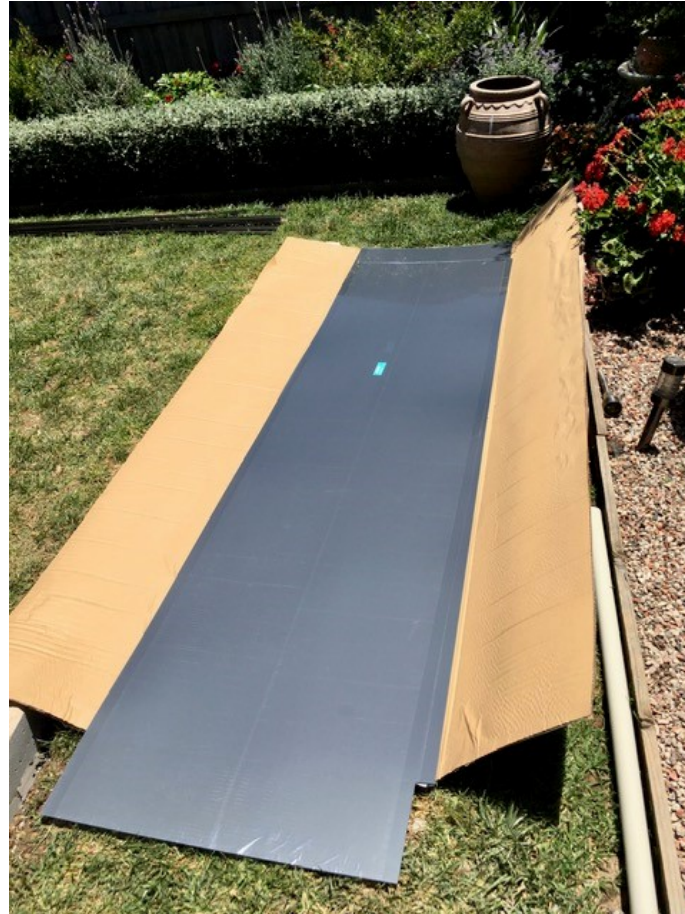
Fit the rafter strips across the beams



Finish off rafters and frame is complete



Time for polycarbonate sheeting



The polycarbonate sheets just “clip in” at the top end. No cutting necessary



Work your way along – install the top seal strips and end pieces as you go



And finally – fit downpipes



Your job is done – Cantaport Complete!

